

ZONE-CUTTING

The feed rate or cutting force can be adjusted individually to different areas of the samples. It reduces deformation and warming of the material thus shortens the preparation process.

**FORCE-CONTROLLED CUTTING**

The cutting force gets precisely controlled by an integrated force-sensor. It keeps the cutting force constant by adjusting the feed rate automatically throughout the cutting process.

**TABLE ATTACHMENT**

With the tool-free mountable table attachment PCBs, plate material or large samples can be quickly sectioned manually.

BRILLANT 210 A

The Brillant 210 A is a compact automatic precision cutting machine with manual cross feed. With its different operation modes and cooling systems it covers a wide range of applications and materials. The user-friendly system of clamping arm, sample

holder and table attachment is designed to change it tool-free.

The proven ATM-software on the 4.3" touchscreen contains a consumable and program database which allows also to create individually set user profiles.

**GRINDING MODE**

In grinding mode, samples can be grinded down with a cup wheel manually or semi-automatically (Target preparation).

CROSS FEED

With a precision of 5 µm the manual Z-axis can be monitored via display for parallel cuts or defined grinding of samples.



BASIC MODULE

BRILLANT 210 A



- » Automatic Y-axis
- » Manual Z-axis
- » Automatic travel measurement (Y-/Z-axis)
- » Variable speed
- » Table attachment (accessory)
- » Dressing device (option)

Up to 5 different operation modes (depending on equipment)

- » Feed-controlled cutting
- » Force-controlled cutting (option)
- » Cutting on table attachment
- » Cutting with lever
- » Grinding mode (defined material removal with grinding cup)

- » 4.3" Touch-Screen with intuitive ATM user software
- » Zone-cutting feature
- » LED illumination of cutting chamber
- » Solid stainless steel housing, powder coated.
- » Soft-closing hood
- » Connection to external exhausting system on request
- » 200 customized cutting programs storable
- » Consumables data base
- » Individual setting of user access rights
- » Setting of care and maintenance tasks incl. automatic reminder
- » USB plug for data exchange and software updates
- » Ethernet plug for online-diagnostics and user support

200 - 240V 50/60Hz (1Ph/N/PE)

100 - 120V 50/60Hz (1Ph/N/PE)

Order No.: M1870020

Order No.: M1870021

EQUIPMENT



COOLING SYSTEMS (no voltage selection required)

Equipment 1

Cut-off wheel immersion cooling (integrated)

Order No.: A1870022

- » Equipment to seal and fill cutting chamber with coolant
- » Incl. drain hose and shut-off valve for easy emptying
- » Sample collector



Equipment 2

Recirculation cooling system 15 L incl. filter

Order No.: A1870023

- » External two-chamber PVC tank
- » Portable, incl. filter insert and lid
- » Rinsing hose



Flow rate (pump)	12 ltr./min.
Filling capacity	15 liters
WxHxD	330x398x449 mm

Equipment 3

Recirculation cooling system 45 L

Order No.: A1870024

- » PVC tank with removable separating slide
- » Inlet sieve with filter bag and overflow
- » Mobile, without folding wheels
- » Rinsing hose included



Flow rate (pump)	15 ltr./min.
Filling capacity	45 liters
WxHxD	366x550x600 mm

EQUIPMENT

COOLING SYSTEMS (no voltage selection required)



Equipment 4
Recirculation cooling system 45 L Systemlab

Equipment 5
Fresh water cooling system



- Order No.: A1870025
- » PVC tank with removable separating slide
 - » Inlet sieve with filter bag and overflow
 - » Mobile, with insertion mechanism for System Lab cabinets
 - » Rinsing hose included

- Order No.: A1870026
- » Automatic water valve
 - » Waterflow manually adjustable
 - » Rinsing hose included

Flow rate (pump)	15 ltr./min.
Filling capacity	45 liters
WxHxD	366x540(640)x610 mm

OPTION



BRILLANT 210 DRESSING DEVICE



- Order No.: A1870027
- » For dressing of diamond cut-off wheels or cup wheels
 - » Operation by manual lever

ACCESSORIES



BRILLANT 210 TABLE ATTACHMENT

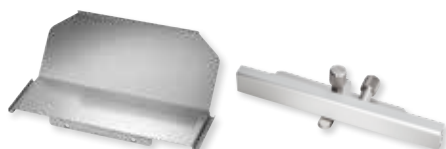


- Order No.: Z1870020
- » Incl. Cutting guide fixed 90°, parallel cutting guide and small splash guard

SPLASH GUARD LARGE



PARALLEL CUTTING GUIDE



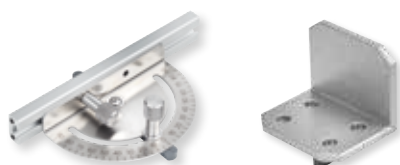
- Order No.: Z1870021
- » Accessory for table attachment

- Order No.: Z1870023
- » Accessory for table attachment

ANGLE CUTTING GUIDE



ANGLE CUTTING GUIDE FIXED 90°



- Order No.: Z1870024
- » Angular adjustable stop
 - » Accessory for table attachment

- Order No.: Z1870022
- » Laterally-adjustable, fixable stop
 - » Guide for parallel cuts
 - » Accessory for table attachment



ACCESSORIES

CLAMPING ARM



» Tool-free attachment of arm and sample holder

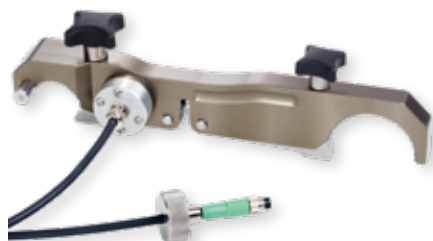


STANDARD M

Order No.: Z1870030

STANDARD L

Order No.: A1870031



INCL. CUTTING-FORCE CONTROL M

Order No.: Z1870032

INCL. CUTTING-FORCE CONTROL L

Order No.: Z1870033

SAMPLE HOLDER STANDARD (open)



» For round or irregular shaped samples
» 3-point clamping
» Up to 6 fixing screws



M

» For clamping arm M
» Diameter Ø 30 mm
Order No.: Z1870034

L

» For clamping arm L
» Diameter Ø 40 mm
Order No.: Z1870035

SAMPLE HOLDER STANDARD (closed)



» For round or irregular shaped samples
» 3-point clamping
» Up to 6 fixing screws



M

» For clamping arm M
» Diameter Ø 30 mm, depth 15 mm
Order No.: Z1870036

L

» For clamping arm L
» Diameter Ø 40 mm, depth 15 mm
Order No.: Z1870037

SAMPLE HOLDER FLEX (closed)



» To insert in grinding and polishing machines
» For round or irregular shaped samples
» 3-point clamping
» Up to 6 fixing screws



M

» For clamping arm M
» Diameter Ø 30 mm, depth 21 mm
Order No.: Z1870038

L

» For clamping arm L
» Diameter Ø 40 mm, depth 21 mm
Order No.: Z1870039

ACCESSORIES

SAMPLE HOLDER PARALLEL CLAMPING VICE (closed)



- » Parallel clamping jaws
- » Clamping range variable, dependent on screws

M

- » For clamping arm M
- » Diameter Ø 30 mm, depth 27 mm
- Order No.: Z1870040

L

- » For clamping arm L
- » Diameter Ø 40 mm, depth 27 mm
- Order No.: Z1870041

SAMPLE HOLDER PARALLEL CLAMPING VICE (open)



- » Parallel clamping jaws
- » Clamping range variable, dependent on screws

M

- » For clamping arm M
- » Diameter Ø 30 mm
- Order No.: Z1870042

L

- » For clamping arm L
- » Diameter Ø 40 mm
- Order No.: Z1870043

EXTRA FLANGES



- » Counteracts offset of the cut-off wheel during cutting

Flange Set Ø 59 mm

Order No.: Z1870050

Flange Set Ø 99 mm

Order No.: Z1870051

Flange Set Ø 139 mm

Order No.: Z1870052



TECHNISCHE DATEN

Cut-off wheel	Ø 75 - 203 mm/8"
Max. sample size	Ø 40 mm
Arbour size	Ø 12.7 mm

Variable speed	300 – 3000 rpm
----------------	----------------

Y-axis (vertical) manual/automatic	120 mm
------------------------------------	--------

Feed Y-axis	0.01 - 20 mm/s
-------------	----------------

Precision Y-axis	0.1 mm
------------------	--------

Z-axis manual (cross feed)	25 mm
----------------------------	-------

Precision Z-axis	0.005 mm
------------------	----------

Motor cut-off wheel	0.37 kW, S1-mode
---------------------	------------------

Connected load	0.75 kVA
----------------	----------

Power supply	1	230 V/50 Hz (1Ph/N/PE)
	2	110 V/60 Hz (1Ph/N/PE)

WxHxD	545 x 391 x 566 mm
-------	--------------------

Weight	45 kg (dep. on equipment)
--------	---------------------------

