

**TOUCH-SCREEN-OPERATION**

All relevant parameters are clearly shown on the large 8.4" touch display during the grinding process. The grinding process can be easily programmed by tapping the different colored icons. Created processes can be password protected and stored with individual information. The Saphir 375 is equipped with a USB port for fast data transfer, program backups, and updates. Remote maintenance can be enabled via an Ethernet interface.

**Saphir 375**

The System Grinder SAPHIR 375 is a solid free-standing unit for effective, plane grinding with a stone.

The grinding head with central pressure is equipped for clockwise or counter-clockwise rotation, and optimally adjustable with variable speed and pressure.

Automatic material removal monitors the removal rate and controls the dressing process. All relevant parameters can be displayed, adjusted and saved via the clear touch-screen interface. A recirculating coolant system is integrated into the modular type aluminium construction.

**MATERIAL REMOVAL MEASUREMENT**

The removal depth can be programmed from 0.01 – 5.00 mm with a stock removal accuracy of 0.1 mm.

In fully automatic mode, the stone's dressing frequency is determined and controlled automatically during the grinding process. Stones may also be dressed at predetermined intervals as well as manually.

Initial dressing occurs automatically when setting up a new stone. Remaining stone usage and processes are dynamically displayed on the screen.

**SAFETY CONCEPT**

The grinding process is activated with Two-Handed Control. The abrasive stone is fully enclosed during the grinding cycle. A safety sensor prevents grinding to occur without grinding stone cover.

The grinding process cannot be started before setting up the stone.



*System lab construction enables variable combinations*



## BASIC MODULE

## SAPHIR 375



Order No.: A5810290

- » free standing grinder with powerful drive
- » central pressure
- » grinding head Rubin 530 with variable speed
- » intuitive operation via Touch-Screen
- » controlled removal
- » automatic, interval controlled dressing
- » grinding disc fully enclosed during grinding
- » integrated in System Lab cabinet made of aluminium, powder coated

## EQUIPMENT

## POWER SUPPLY



Equipment 1

**400 V/50 Hz (3Ph/N/PE)**

Order No.: A5810287

Equipment 2

**480 V/60 Hz (3Ph/PE)**

Order No.: A5810288

Equipment 3

**220 V/60 Hz (3Ph/PE)**

Order No.: A5810289



## ADAPTION FOR GRINDING STONE



Equipment1

Order No.: A5810291

- » adaption for ATM standard grinding stone (glued carrier plate)

## ACCESSORIES

## RECIRCULATION COOLING SYSTEM WITH INSERTION MECHANISM



- » 2-chamber-pvc-compartment 45 ltr.
- » controlled by grinder

**400 V/50 Hz (3Ph/N/PE)**

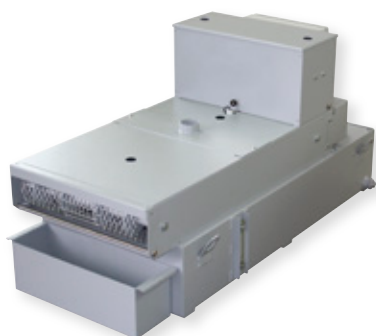
Order No.: A5800484

**480 V/60 Hz (3Ph/PE)**

Order No.: A5800485

**220 V/60 Hz (3Ph/PE)**

Order No.: A5800486



## BELT FILTER SYSTEM 130



- » for high grinding volume
- » incl. filter roll

**400 V/50 Hz (3Ph/PE)**

Order No.: A6501009

**480 V/60 Hz (3Ph/PE)**

Order No.: A6501011

**220 V/60 Hz (3Ph/PE)**

Order No.: A6501010

Tank	130 ltr.
Filter capacity	30 ltr./min (referring emulsion)
Pump	15 ltr./min
WxHxD	607x632x1308 mm
Weight ~	90 kg

- » for belt filter system please order connection-set

Order No.: Z6501005

## SPECIFICATIONS

Connected load	7 kVA	
Power supply	1	400 V/50 Hz (3Ph/N/PE)
	2	480 V/60 Hz (3Ph/PE)
	3	220 V/60 Hz (3Ph/PE)
GRINDING MODULE		
Speed*	1	1390 rpm
	2	1700 rpm
	3	1695 rpm
Grinding stone	Ø 350 mm	
Usable coating	30 mm	

## GRINDING HEAD RUBIN 530

Central pressure	sample holder Ø 160 – 204 mm
Variable speed	30 – 150 rpm
Variable pressure	50 – 400 N
Stock removal depth	0.01 – 5.00 mm
Stock removal accuracy	0.1 mm
WxHxD ~	880 x 1420 x 830 mm
Weight	230 kg

\* depending on power supply (equipment)

